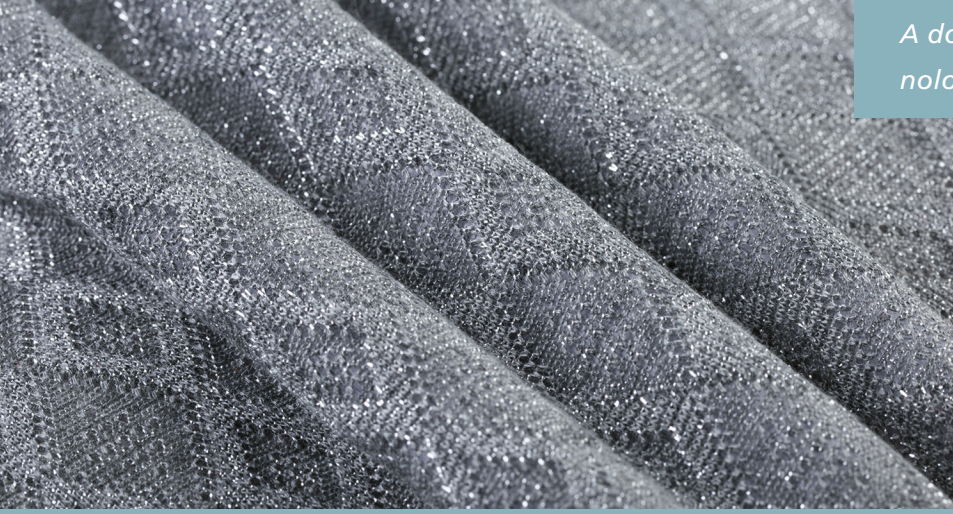


A double jersey universalist with transfer technology for hole patterns and SJIDJ combinations



OVJA 1.6 ET

our performance for your profit



Stitch verge combined with transfer technology



Convertible into a full feeder electronic jacquard machine



Slider cam technology = quick and safe change of fabric structures



Proven and reliable electromagnetic single needle selection

Application:

Combinations is the magic word when it comes to the OVJA 1.6 ET. Thanks to the transfer technology that this machine features, the OVJA 1.6 ET knits single and double jersey combinations as well as hole patterns and rib transfers.

Mayer & Cie. is able to produce cylinders with stitch verges in-house, thanks to the highest level of precision. Mayer & Cie. equips its transfer machines with these cylinders. Thanks to transfer needle and stitch verge collaborating so closely, the OVJA 1.6 ET easily combines double and single jersey structures. It takes just a few quick moves and an optional conversion kit to turn the OVJA 1.6 ET into a full jacquard machine. As such, it knits an even bigger variety of structures, including spacer, needle plush and double face with and without lay-in yarn. To make full use of the manifold options, structure changes need to be swift. The slider cam technology in the dial coupled with electronic single needle selection in the cylinder makes sure this is the case.

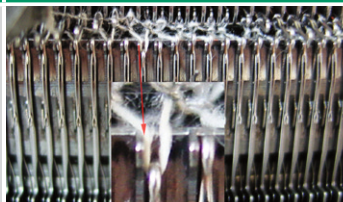
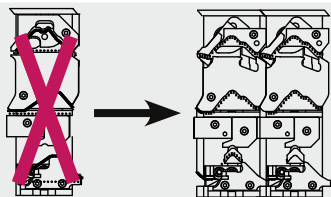
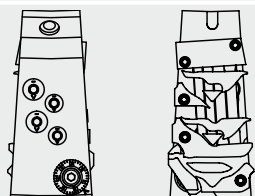

Almost anything is possible on this machine: outerwear, underwear, sportswear, homewear, and footwear.

Further arguments in the OVJA 1.6 ET's favour are its outstanding reliability along with first-rate user friendliness. Not to forget the enormous variety of structures it can produce.



Equipped with **GROZ-BECKERT®**

The most important facts for you at a glance:

| Our feature | Your advantage | Your benefit | Photo/graphic |
|---|---|--|---|
| Stitch verge in dial and cylinder combined with transfer technology | Variety of structures: Combination of single and double jersey, hole patterns and rib transfer | Flexibility of fabric styles = highest utilization of your investment |  |
| Convertible to a full feeder electronic jacquard machine | Increased productivity Even more structures possible, e.g. double layer, spacer and many more | Flexibility of fabric styles = highest utilization of your investment |  |
| Slider cam parts in the dial can be adjusted from outside (option) | Fast and easy pattern changes | Time saving and reduction in costs Higher profit |  |
| Proven and reliable electromagnetic single needle selection | Maintenance-free | Low operating costs |  |

Technical data

| | |
|--------------------|---------------------------|
| Cylinder diameter: | 30 - 34 |
| Machine gauges: | 14 - 18 |
| No. of feeders: | 48 feeders at 30" |
| Speed up to: | (20 rpm at 30") SF 600 |

Production example (unfinished)

| | | | |
|--|-----------------------------------|--------------------------------|--|
| Structure: Pattern no: 84009 Rib 1:1 transfer | Efficiency rate: 85,00% | Gauge: 15 | Weight: 210 g/m ² |
| Diameter" 30" | rpm 20 | Production m/h 29.67 | Production kg/h 10.59 |
| Structure: 1:1 transfer | Efficiency rate: 85,00% | Gauge: 16 | Weight: 60 g/m ² |
| Diameter" 34" | rpm 18 | Production m/h 30.04 | Production kg/h 4.47 |



Mayer & Cie.

www.mayercie.com

